

BC9309S LED Explosion Proof Light (Bracket -Spotlight)

TORMIN



IP
66

Ta
40/55

Ta
-50



Ex marking: Ex nR IIC T4/T3 Gc
Ex tb IIIC T130°C/T195°C Db

Application

- Ideal to be used in the oilfield, chemical industry, offshore drilling platform, steel industry, petroleum etc.



Characteristics


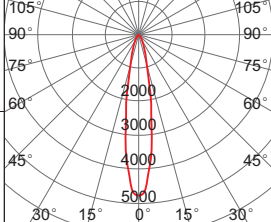

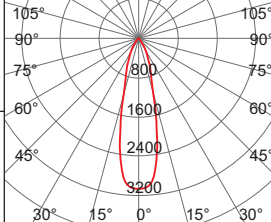
- Super power, maximum power up to 480W, can replace more than 1000W metal halide lamps and sodium lamps.
- Housing made of special aluminum processing, hardware and brackets adopt 304 stainless steel, using high-tech anti-corrosion surface treatment technology, can be long-term suitable for seaside, chlor-alkali, hydrogen sulfide and other highly corrosive areas.
- Superconducting aluminum comprehensive self-loop thermal design, long-term suitable for operating environment with high temperature and high humidity. Upper and lower ventilation fin structure, no dust.
- Variety of light distribution, variety of installation types, same shape, an effective solution to beautify workshop and device platform.
- It adopts Imported light source, no dark zone in light spot, no ghosting, can save 60% or more on energy than the metal halide lamp.
- AC and DC wide voltage constant power supply, power factor above 0.98.
- It can quickly replace the light source without welding.
- Independent wiring chamber, safe and convenient for installation and maintenance.
- According to user needs, can choose light fixtures with a variety of intelligent control.

Main Specification

| Item | Technical Parameters |
|---------------------------|-----------------------------|
| Input voltage (V) | 90~305VAC |
| Rated frequency | 50Hz / 60Hz |
| Light source | LED |
| Life time (h) | 50,000 |
| CRI | Ra 70 (80 optional) |
| CCT | 5000K(3000K/4000K optional) |
| Leading-in cable diameter | φ 8mm~ φ 12mm |
| Dimension (mm) | 602×270×340 |
| Net Weight (kg) | 13.5 |

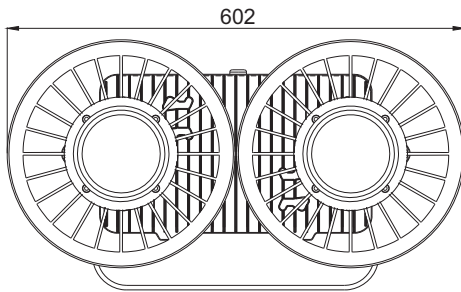


Ordering reference

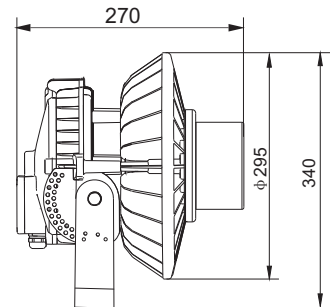
| Model Number | Picture | Rated wattage (W) | Light output (lm) | Light distribution Curve(1000cd/lm) | Equivalent to |
|-------------------|---|-------------------|-------------------|---|---------------|
| | | | | | MH |
| BC9309S□-L240-18° |  | 240W | 23000 |  | 600W |
| BC9309S□-L300-18° | | 300W | 29200 | | 600W-1000W |
| BC9309S□-L400-25° |  | 400W | 40600 |  | 1000W |
| BC9309S□-L480-25° | | 480W | 47000 | | >1000W |

Note : order number "□" according to the actual installation needs fill in 1 or 2, S1 straight stent, S2 angle bracket.

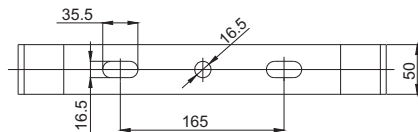
Drawing of dimension (Dimensions in mm)



Seat mountingS1

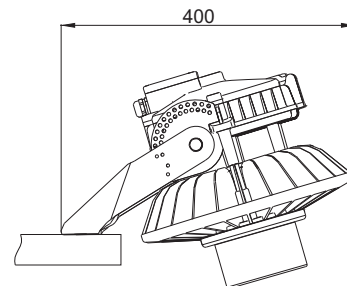


BC9309S1



Installation Dimension

Seat mountingS2



BC9309S2