

Mitcorp INDUSTRIAL VIDEOSCOPE

- CLEARNESS
- SHARPNESS
- BRIGHTNESS



F 1000 | F 700

F1000



Specifications	
Camera head:	
Lighting	8 LEDs (white)
Dimeter / Lenth	28mm
Material	Stainless steel
Working temperature	-10°C - 60°C
Storage temperature	-10°C - 60°C
Water proof	Can be operated under water 10m
Display resolution	640 x 480
Reel:	
Diameter	300mm
Water proof	IP65
Probe:	
Diameter	6.0mm
Applicable pipe(ø)	40mm - 100mm
Length	22m

F700



Features	Description
System Dimension	275x123x55 mm
System Weight	370g (w/o batteries)
Display	3.5" TFT LCD QVGA
Power	4 x AA 1.5V batteries (included)
Battery life	4 hrs (typical)
Storage	SD card (SDHC), up to 32G
Video out	NTSC & PAL / AV out
Video / Photo file format	.avi / .jpg
Video / Photo resolution	640x480
Working temperature	0°C ~ 60°C
Storage temperature	0°C ~ 60°C



3.9 mm Front / Side

Features	Description
Probe head diameter	3.9mm
Tube length	1m
Light source	Front and Side
FOV	56°
DOF	10mm-60mm
Working temperature	-10°C ~ 60°C
Storage temperature	-10°C ~ 60°C
Resolution	320x240



4.5 mm Two Ways Articulations

Features	Description
Probe head diameter	4.5mm
Probe head length	13mm
Probe diameter	1.5m, 3m
Articulations	right-left 180°
Probe head material	Stainless steel
Probe material	Outer braided stainless steel
Light source	Front, LEDs
Field of view (FOV)	90°
Depth of field (DOF)	10mm~100mm
Button	boost, image rotation
Working temperature	-10°C - 60°C
Storage temperature	-10°C - 60°C
Resolution	640x480





6.0 mm 360 Articulations

Features	Description
Probe head diameter	6.0mm (w/o lock ring)
Probe head length	24mm
Probe length	1m / 3m
Weight	1m-650g ; 3m-790g
Articulation angle	full ways ≥110°
Probe head material	Stainless steel
Probe material	Outer braide stainless steel
Light source	Front / Side
Field of View (FOV)	90°
Depth of Field (DOF)	10mm~100mm
Button	Boost / Rotate / Particle free
Articulation shaft lock	Left-open, right-lock
Working temperature	-10°C~60°C
Storage temperature	-10°C~60°C
Resolution	640*480

PR series Rugged and Robust

- Equipped with IP57 main system (F1000), great for indoor and out door inspection
- Stainless steel camera head, IP 68 protection
- Water and dust proof (camera head IP68, reel IP65)
- Optional accessories: metal ring, brush, wagon
- IP55 protection m/ft meter (optional)

 10mm DEPTH OF FIELD	 150° FIELD OF VIEW	 25,000 times PASS THROUGH FOUR 90° ELBOW BENDS
 IP68 (CAMERA HEAD)	 IP65 (REEL)	 IP57 (SYSTEM)

Accessories

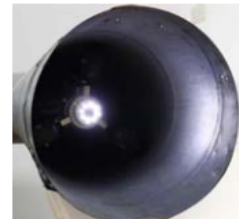
Metal ring ø50mm



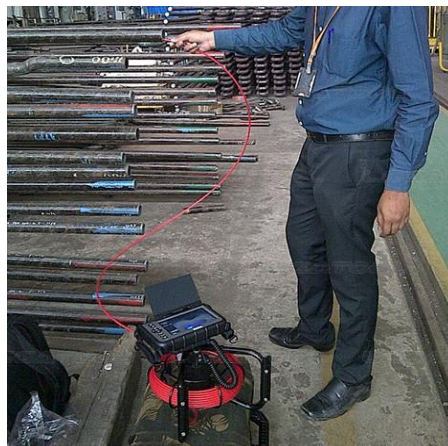
Large Brush ø100mm or ø150mm



Wagon ø150mm ~300mm



Specifications	
Camera head:	
Lighting	8 LEDs (white)
Dimeter / Lenth	28mm
Material	Stainless steel
Working temperature	-10°C - 60°C
Storage temperature	-10°C - 60°C
Water proof	IP68 (10m)
Display resolution	640 x 480
Reel:	
Diameter	300mm
Water proof	IP65
Probe:	
Diameter	6.0mm
Applicable pipe(ø)	40mm - 100mm
Length	22mm
Flexibility	Four 90° bends in 40mm pipe



Mitcorp



FB: [Mitcorpglobal](#)



Youtube: [Mitcorpglobal](#)



✉ e-mail: sal@mitcorp.com.tw

website: www.mitcorp.com.tw



2F., No.75, Wenhua 1st Rd., Guishan, Taoyuan 333, Taiwan
T+886-3-328-7177 F+886-3-328-7176