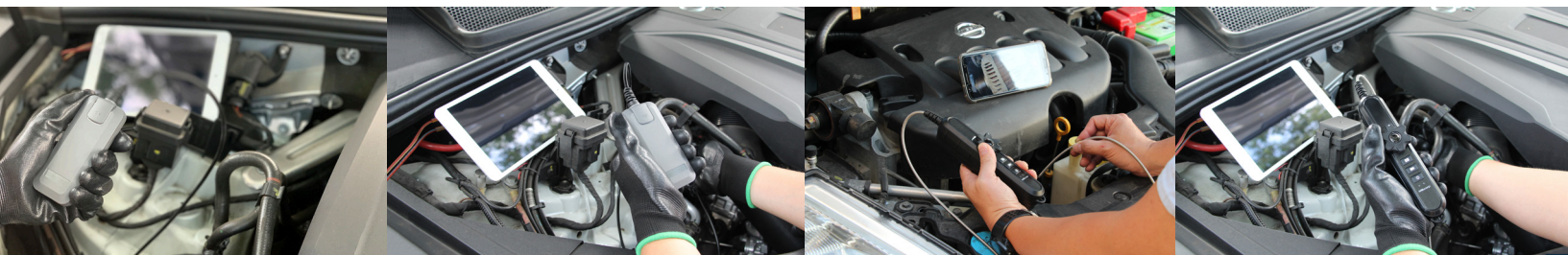


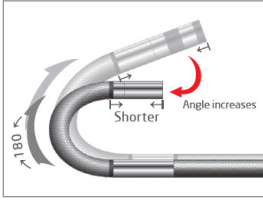
Mitcorp

WiFi Videoscope

W2145 | W1149



W 2145



- 180° one way Articulation
- Stainless steel outer braided

- High Resolution
- 6 hours operation



Snapshot/Video record/
power



USB Type-C charging port



Specifications

W2145 Console

Item	Description
Dimensions	L:207.5mm W:35mm H:50mm (w/o insert probe)
Weight	248g
Battery	2600 mAh Li-ion Battery, up to 6 hrs typical operation / 3hrs charging
Power source	≥ DC in 5V 1A, Type C, USB compatible
Wi-Fi standard	IEEE 802.11 b/g/n, 2.4GHz
Antenna	Built-in
Transmission distance	0~10m (Typical open space)
Button	Snapshot Video Recording power on/off
Power indicator	Power / Lower battery
Charging working temperature	0°C~40°C
Water proof	IP67
Drop resistance	1m
Certification	CE/FCC/TELEC/NCC

Pobe

Item	Description
Probe head diameter	4.5mm
Probe head length	13mm
Probe length	1m
Articulation angle	right 180° ^(*)
Probe head material	stainless steel
Probe material	outer braided stainless steel
Light source	Front
FOV	90°
DOF	10mm~100mm
Working temperature	-10°C~60°C
Storage temperature	-10°C~60°C

* The maximum articulation angle may degrade over time

* High temperature during charging/operation may cause battery degradation of performance and life

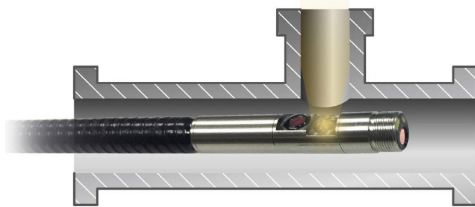
W 1149



Semi-rigid metal probe provide good pushing strength and can be bent into any desired shape



1 second switch dual cameras between front view and side view



4.9mm Dual-cameras with patent design



Power On / Off



Micro USB charging port



Convenient attachable with mobiles by built-in back magnet

Specifications

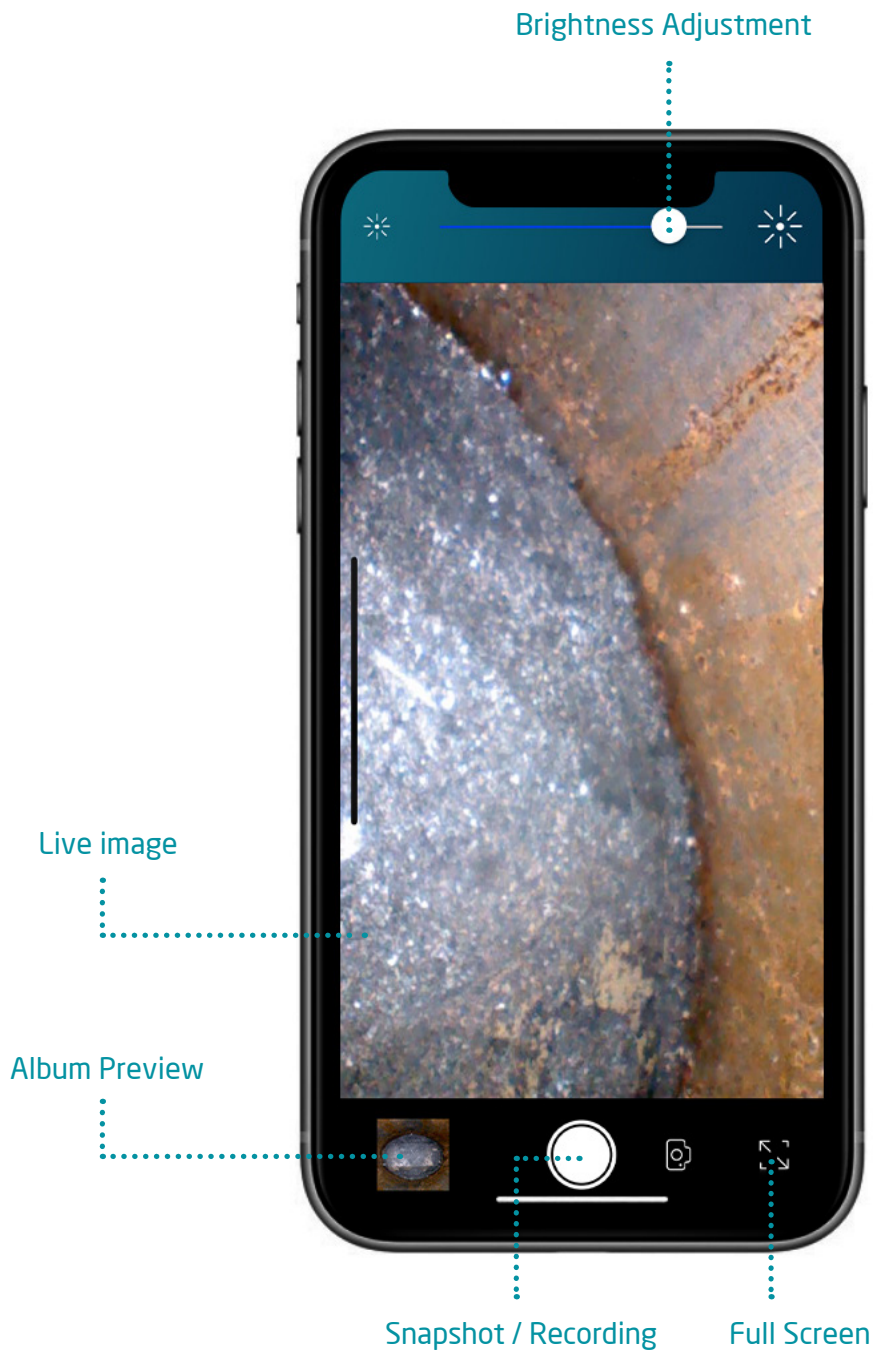
W1149 Console

Item	Description
Dimensions	L113mm, W478mm, H23.8mm
Weight	235g
Powers source	Built-in 1150 mAh Li-ion battery
Battery	Up to 2 hours typical operation / 2 hours charging
Power	≥ DC in 5V 1A, USB compatible plug
Wi-Fi standard	IEEE 802.11 b/g/n, 2.4 GHz
Antenna	Built-in
Transmission distance	0~10m (Typical open space)
Image format	640x480, .jpeg
Video format	640x480, .avi
Working temperature	0°C~45°C
Storage temperature	-10°C~60°C
Drop Resistance	1m
Certification	CE/ FCC/ TELEC

Probe

Item	Description
Probe head diameter	4.9mm
Head length / material	28mm / Steel semi-rigid type
Probe length / material	1m / Stainless steel
Light source	Front / Side LED. Dimming control by App
FOV	56°
DOF	10mm~60mm
Working temperature	-10°C~60°C (Camera head)
Storage temperature	-10°C~60°C
Water / Dustproof	Under water 1m for 30min

WiFi connection



Mitcorp

2F #75 WenHua 1st Rd. GuiShan Dist.
Taoyuan City, Taiwan 33382
T +886-3-328-7177 F +886-3-3287176
Email:sal@mitcorp.com.tw
Website: www.mitcorp.com.tw

