

# Mitcorp INDUSTRIAL VIDEOSCOPE

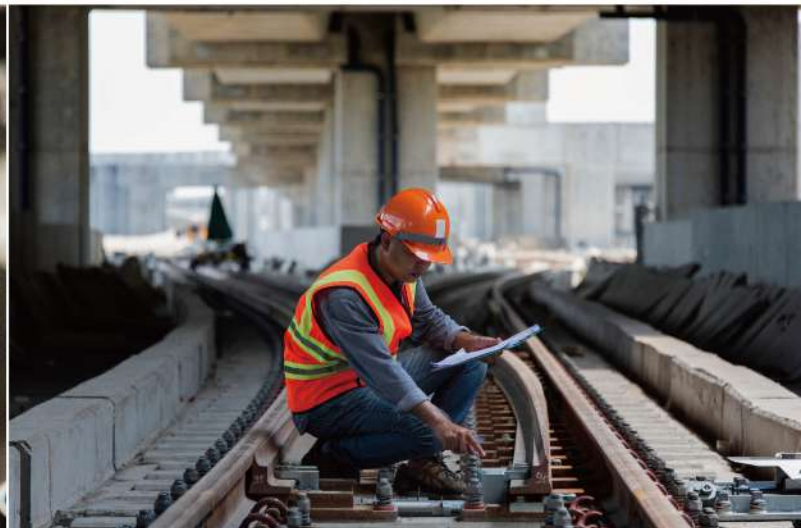
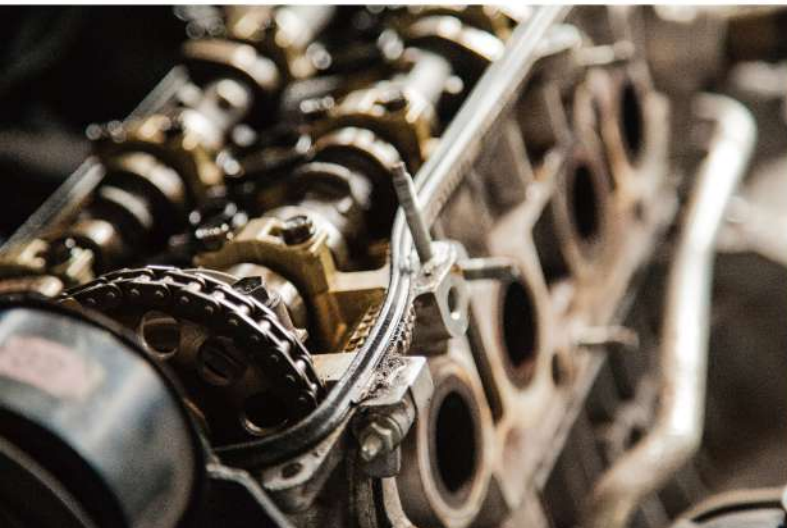
■ CLEARNESS ■ SHARPNESS ■ BRIGHTNESS



**Flexibility Redefined | X750**

# Flexibility and Power on the go

Designed for applications where high mobility is needed, the X750 is lightweight, rugged, and provides high-resolution images and advanced imaging functions that allow workers to fulfill their tasks in even the most challenging environments.





# PRODUCT CHARACTERISTICS



## FLEXIBILITY

- Lightweight (1.2 kg)
- Ergonomic Shoulder Strap and Roll up Tubes
- Interchangeable Probes and Batteries
- One-Hand Operation

## CONNECTIVITY

- Wi-Fi, HDMI, USB Type C output supported
- Controllable via VideoscopeNow App
- Exclusive GPS mark on photos for utility

## INNOVATION

- Backside Camera with GPS
- Full Touchscreen UI
- Detachable Screen Module
- Custom Button on Joystick

## PRODUCTIVITY

- SESSION/TAG Image Storage Setting
- Comprehensive Photo Annotation Function
- Report Assist Software
- New launched "Insight" report generation & GPS mapping software.

## DURABILITY

- IP 67 Tungsten Braided Insertion Probes
- 100°C Heat Resistant Camera Tip
- IP 54 Console Unit
- 1m Drop Resistant

## TRUE SIGHT

- Super Resolution
- Fine Image Quality
- Advanced Imaging Functions

# Flexibility

Designed for portability and versatility

## Lightweight

The X750 is extremely lightweight, with the whole system weighing only 1.2 kg.

## Ergonomic

The handy design, the shoulder straps, and the roll-up tubes of the X750 allow for one-handed operation.

## Flexible

Interchangeable probes and batteries improve productivity and give you the necessary flexibility for even the most complex applications.



Interchangeable Probes  
(3.9mm/6.0mm)



Exchangeable Li-Batteries  
(3 hours operation per battery)



One-Hand Operation



Neck-Strap & Roll-Up Tubes

# Connectivity

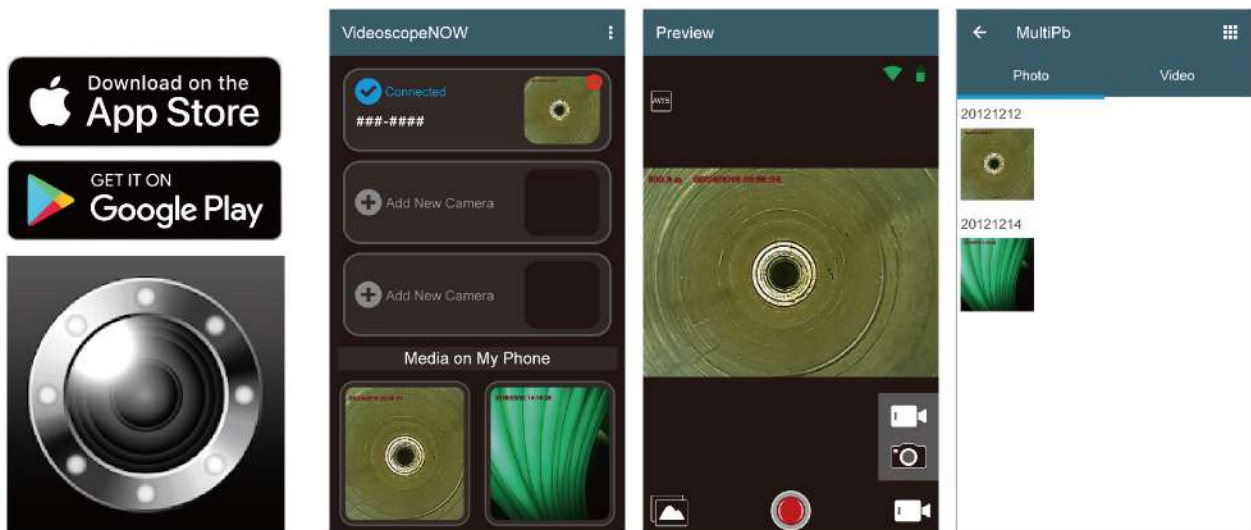
Benefit from multi-connection Solutions



## Comprehensive Solutions

### Controllable Via App

The X750 can link with mobile devices via our VideoscopeNow App. The app lets you control the X750 remotely and download photos and videos onto your device.



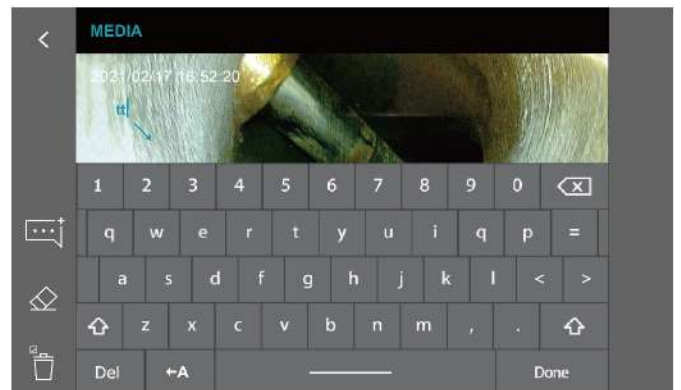
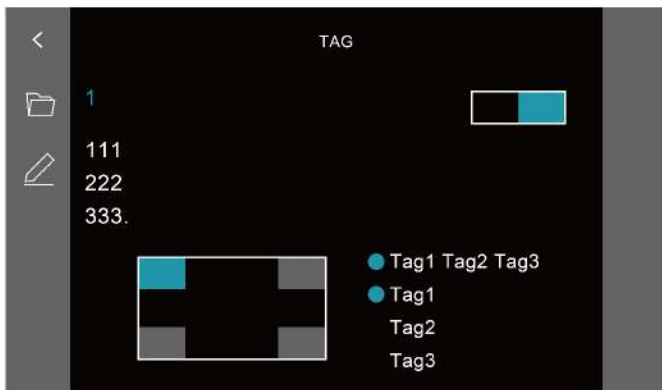
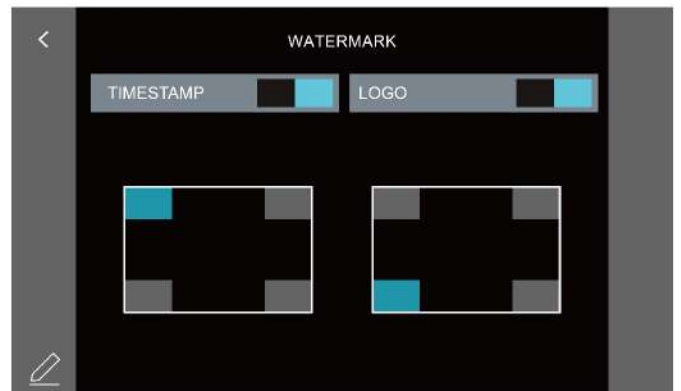


# Productivity

## Advanced File Management

The X750's software includes a file management system that allows you to sort photos and videos into session folders. You can write notes or annotations and add them to your images. A compare function enables you to compare the live view image to gallery images.

You can also include logos and watermarks as well as session tags. These functions make keeping track of all your inspections easy and convenient.



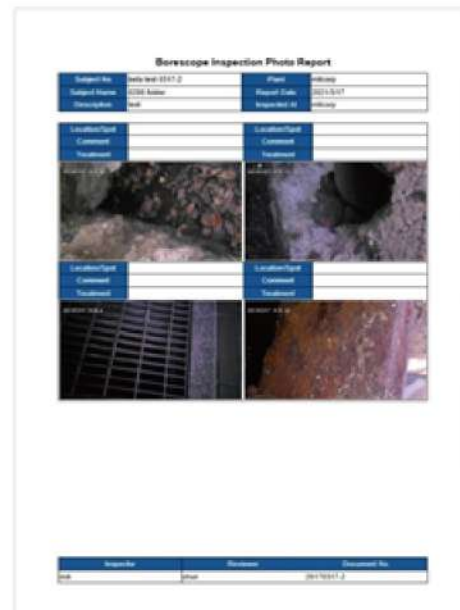
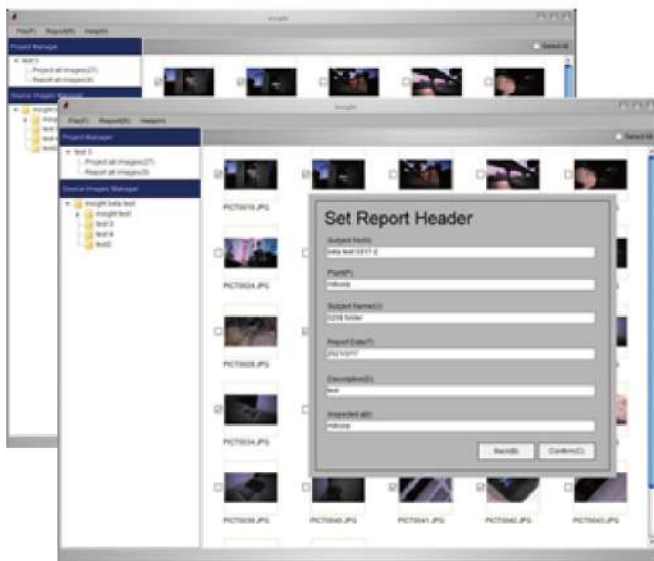


Insight From the Site to the office:  
Improve your inspection workflow

## Report Generation



Generate reports in just 4 steps. Review images and add comments within a well-integrated work process. It significantly improves the workflow and reduces the time needed to sort through large numbers of images.

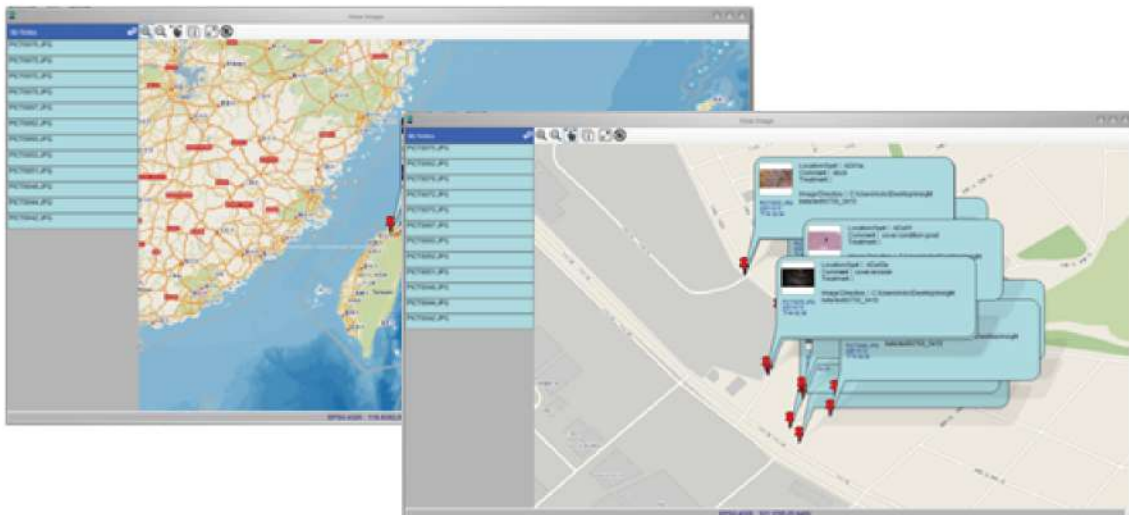


## Location Management



Keep an overview of all inspected objects in large projects.

Images can be GPS tagged and laid out on a map. There, you can easily see different locations, the associated photos, and comments made to these photos.



# Innovation

---

## Secondary Camera

The X750 possesses a powerful secondary camera on the backside with 2560\*1440 pixels giving you the ability to take photos from greater distances. The built-in GPS function allows you to tag images and map them out in our Insight software. That creates a better overview in even the most difficult inspections and ensures never getting lost in large areas (for example, offshore wind farms).



## Best Image Viewing Experience

---

### 5" full-touch screen

The X750 features a 5" high-resolution LCD touch-screen that provides an excellent viewing experience.

### Manual Exposure

It also features the same manual exposure known from our X2000, which works similar to that of a smartphone. It allows you to adjust the exposure with only one click on the screen. That makes it not only very helpful but also very convenient to use.



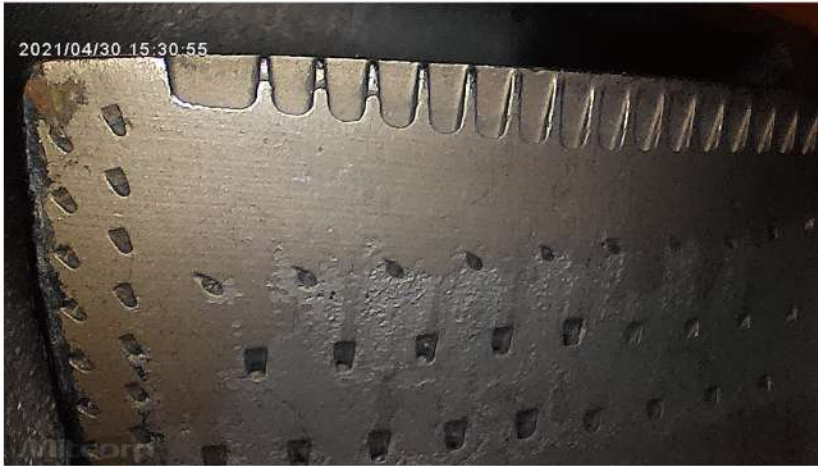


# True Sight

## Super Resolution & Fine Image Quality



- 6.0mm/3.9mm probe
- Still image: 2560\*1440
- Video record:2560\*1440



Benefit from stunning video quality and crisp images, all without compromising probe size or maneuverability. Our inspection probes are the combination of a small, flexible probes and flawless image quality that will elevate your inspections.

60HD 2560\*1440 output. (10 mm distance)



### Advanced FOV (Field of View)

The enhanced field of view (FOV) of our new 3.9mm HD lenses allows you to see wider angle than ever before. Especially in combination with the shorter probe tip and the large articulation angle of our probes, it allows for a comprehensive inspection during which no flaw will remain undetected.

39HD 2560\*1440 output. (10 mm distance)



### Advanced DOF (Depth of Field)

The depth of field (DOF) needed for an inspection, can vary depending on the application field of your videoscope. Airplane turbines, for example, require a different focal length than an engine block of an automobile. Mitcorp offers a variety of different focal lengths to fit your needs.

39HD 2560\*1440 output. (5 mm distance)

# Durability

## Tungsten & Rigidity



Enhanced tube strength release





# Specifications

Base Unit	
Dimension	L=327.5mm W=152.8mm H=201.3mm
Weight	1230g (w/2m tungsten tube)
Water Resistance	IP 54
Display	5 inches / detachable touchscreen / 800*480 resolution
Function Buttons	Power ; Reset (pin button)
I/O Port	Micro-SD memory card slot USB Type-C (power in/data out) Mini-HDMI (Av output)
Tip Temperature on screen	60°C / 80°C / 100 °C - 3 Level Warning
Wi-Fi	802.11 b/g
App	VideoscopeNow
LED Indicators	Green - working / fully recharged Red - low power / recharging
Microphone	Built - in (on/off switch in settings menu)
Compatibility	60 HD Tungsten 2M / 3M / 7M 39 HD Tungsten 1.5M / 3M Screen Detachable Mode
External Light	LED
External Camera	2560*1440 JPG
GNSS	GPS, GLONASS Dual Mode

Joystick	
Articulation	Full Way
Function Buttons	4 Buttons: Brightness + / Brightness - / Snapshot / Record / Custom Self - Definition
Articulation Control	Joystick/ Lock - Stop & Go
Water Resistance	IP 54
Battery (One Piece)	4900mAh replaceable Li - ion Battery
Working Time	3 Hours of Operation (with 2m/3m)
Battery /Charger Set	
Dimension	117.5*76.8*69.7mm
Weight	Full Set (Batteries w/ Charger Set): 393g; Battery 113g; Charger Set: 165g
Charging Time	6 Hours for 2 Batteries / 3 Hours for 1 Battery
LED Indicator	Red: Charging / Green: Fully Charged

## Our 360° Articulation Probes



Options	60HD	60HDLF	39HD
Product	 Front view Dual light sources	 w/side view mirror    w/dual view mirror	 Front view
Probe head diameter	6.0mm	6.0mm	3.9mm
Probe head length	19.3mm	19.3mm	13mm
Direction of View	Front view	Front view	Front view
Illumination	Front / Side LEDs	Front / Side LEDs	Front LEDs
Field of View (FOV)	90°	90°	120°
Depth of Field (DOF)	10mm~100mm	25mm ~∞	5mm - 100mm
Still image resolution (.jpg)	2560*1440		
Video resolution (.mov)	2560*1440		
Probe length	2m / 3m / 7m		1.5m / 3m
Articulation angle	2m, 3m full ways ≥120°		Full ways ≥140°
Probe head material	Stainless steel		
Probe material	Tungsten braided		
Joystick console dimensions	(W x D x H) 139.4x193x84.2mm (w/o SR and insert tubes)		
Joystick buttons	Brightness +, Brightness -, snapshot / record		
Lock and move	Joystick / Unlock switch on console		
Operating temperature	In air: -10 - 100°C, In water: 10 - 30°C		In air: -10 - 60°C, In water: 10 - 30°C
Dust and water proof	Joystick console: IP 54; Insert Tube: under water 1m for 30 minutes		
Relative humidity	Max 95% non-condensing		
Liquid resistance	Operable when exposed to machine oil, light oil or 5% saline solution		
Storage temperature	10°C - 70°C		



## Trolley Case & Accessories



### 1 Lithium-ion Batteries:

Quickly removable batteries; that provide 3 hours of operation each.

### 2 Probe Adapters:

The X750 comes with a Side View and Dual View Mirror adapter as well as a Pin adapter for measurements.

### 3 Accessory Box:

A variety of different power adapters are available to recharge your X750. A mini-HDMI cable, a USB Type-C cable, a memory card, and a cleaning kit are also part of the package.

### 4 Rigid Sleeve:

Rigid sleeves are available for 6.0mm and 3.9 mm probes. Each rigid sleeve comes with an additional extender for the sleeve.

### 5 Neck Strap:

The X750 comes with a detachable neck strap that can be easily attached or detached.

### 6 Trolley Case:

The trolley case is lightweight and dust, and waterproof. It is rugged and ensures that your X750 stays safe during your travels.



Are you ready to take your inspection to a new level?

website:[www.mitcorp.com.tw](http://www.mitcorp.com.tw)

✉ e-mail:[sal@mitcorp.com.tw](mailto:sal@mitcorp.com.tw)

2F., No.75, Wenhua 1st Rd., Guishan, Taoyuan 333, Taiwan  
T+886-3-328-7177 F+886-3-328-7176

© 2020 Medical Intubation Technology Corporation (Mitcorp).  
All rights reserved. Design and specifications are subject to change without prior notice.  
Actual product and accessories may differ from illustrations. Errors and omissions excepted.  
Reproduction in any manner without written permission of Mitcorp is strictly forbidden.



Mitcorp



Mitcorpglobal



Mitcorpglobal

